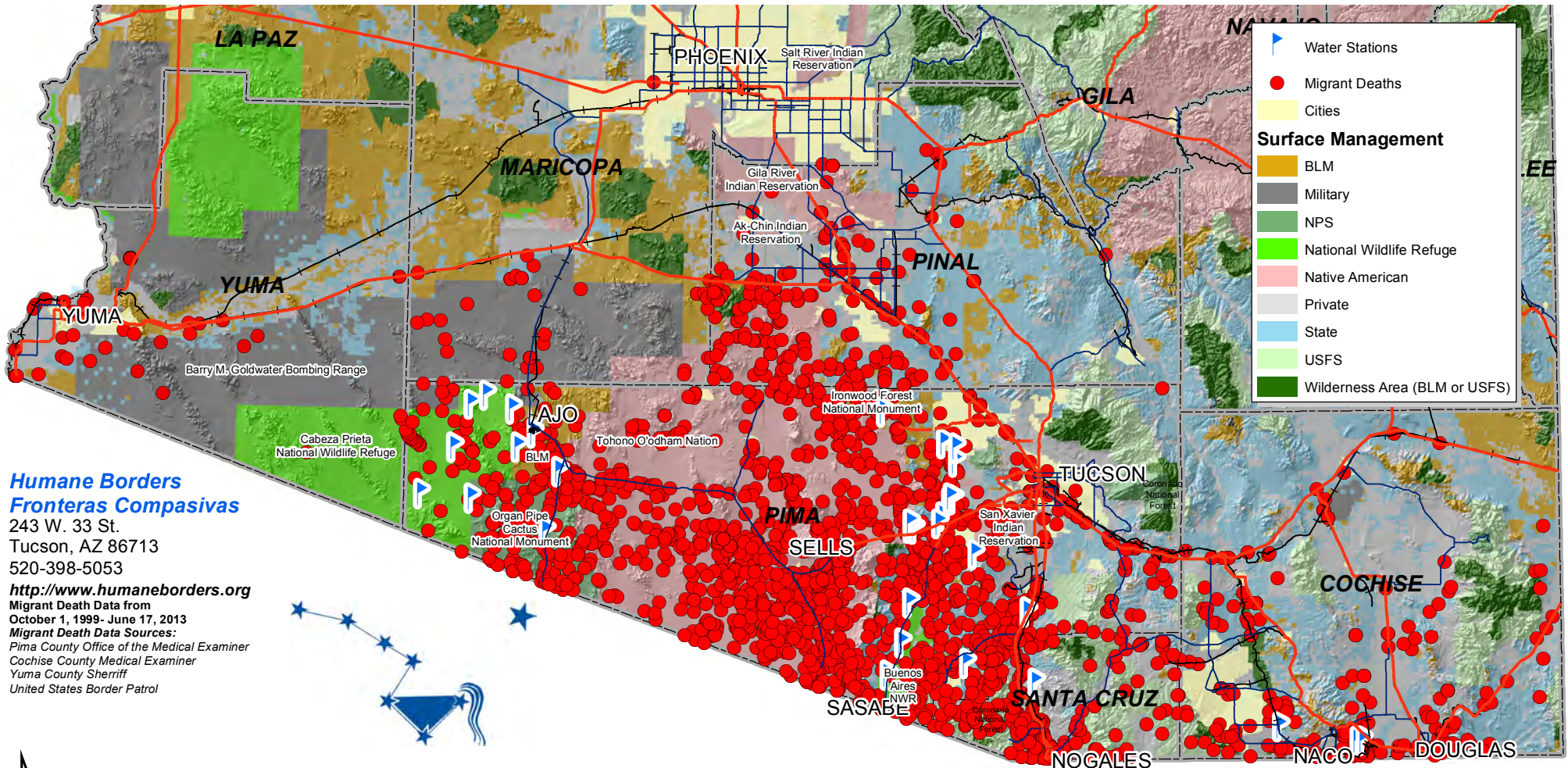


1999 - 2013 RECORDED MIGRANT DEATHS AND HUMANE BORDERS WATER STATIONS

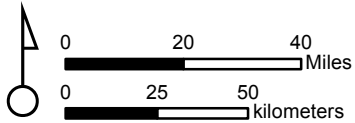


Humane Borders Fronteras Compasivas

243 W. 33 St.
Tucson, AZ 86713
520-398-5053

<http://www.humaneborders.org>

Migrant Death Data from
October 1, 1999- June 17, 2013
Migrant Death Data Sources:
Pima County Office of the Medical Examiner
Cochise County Medical Examiner
Yuma County Sheriff
United States Border Patrol



Between October, 1999 and June 2013, Humane Borders collected data concerning 2,471 migrant deaths. This map shows those that can be located in space. Some dots represent more than one death.

Over the past 13 years, Humane Borders has deployed equipment for over 80 water stations at remote, strategic locations in Mexico and the USA.