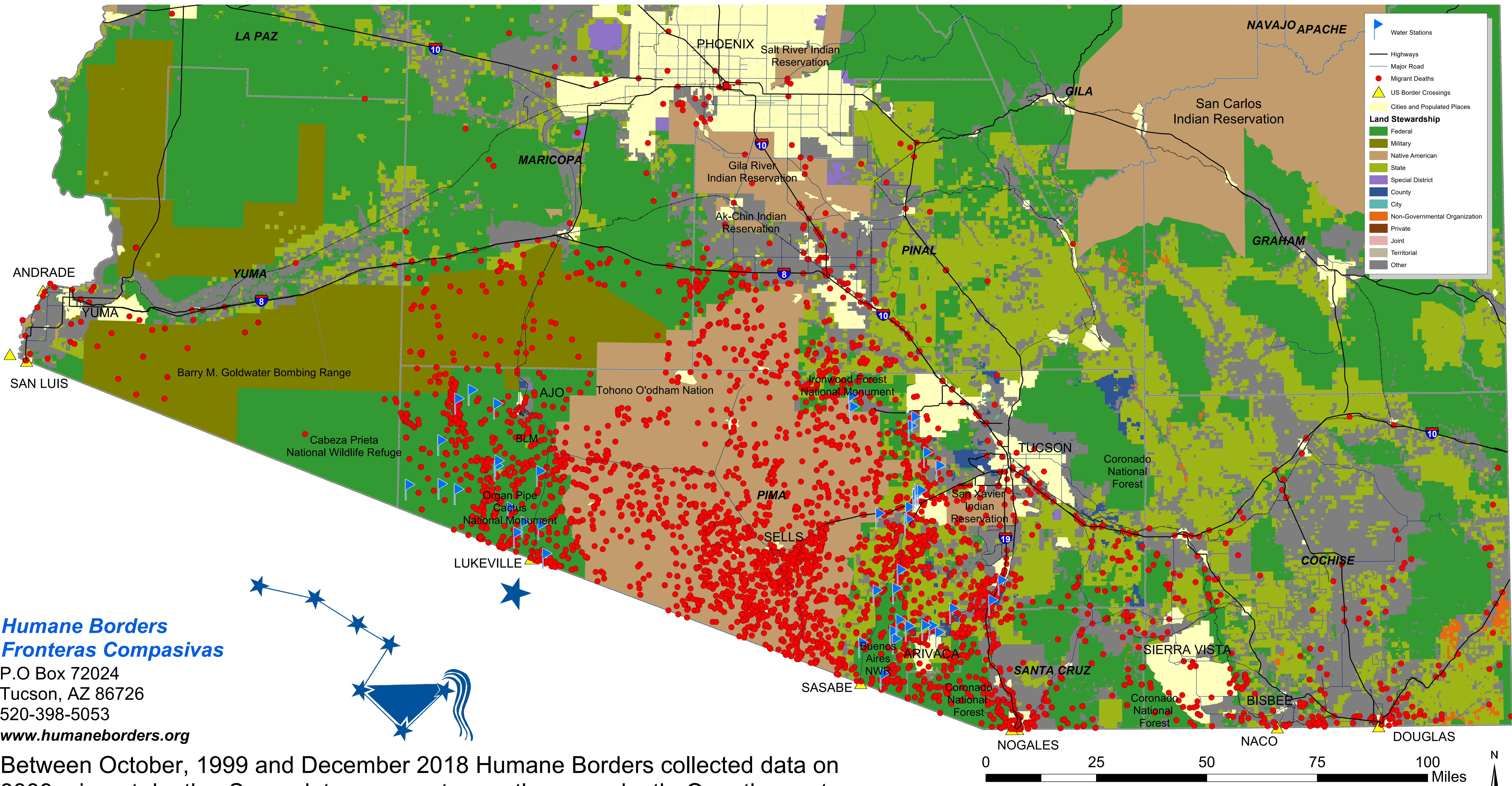


# 1999 - 2018 Recorded Migrant Deaths and Humane Borders Water Stations



**Humane Borders**  
**Fronteras Compasivas**  
P.O Box 72024  
Tucson, AZ 86726  
520-398-5053  
[www.humaneborders.org](http://www.humaneborders.org)

Between October, 1999 and December 2018 Humane Borders collected data on 3339 migrant deaths. Some dots represent more than one death. Over the past 18 years, Humane Borders deployed equipment for over 80 water stations at remote, strategic locations in Mexico and the USA.

**Migrant Death Data Sources:**  
Pima County Office of the Medical Examiner  
Maricopa County Medical Examiner  
Cochise County Coroner  
Yuma County Sheriff  
United States Border Patrol