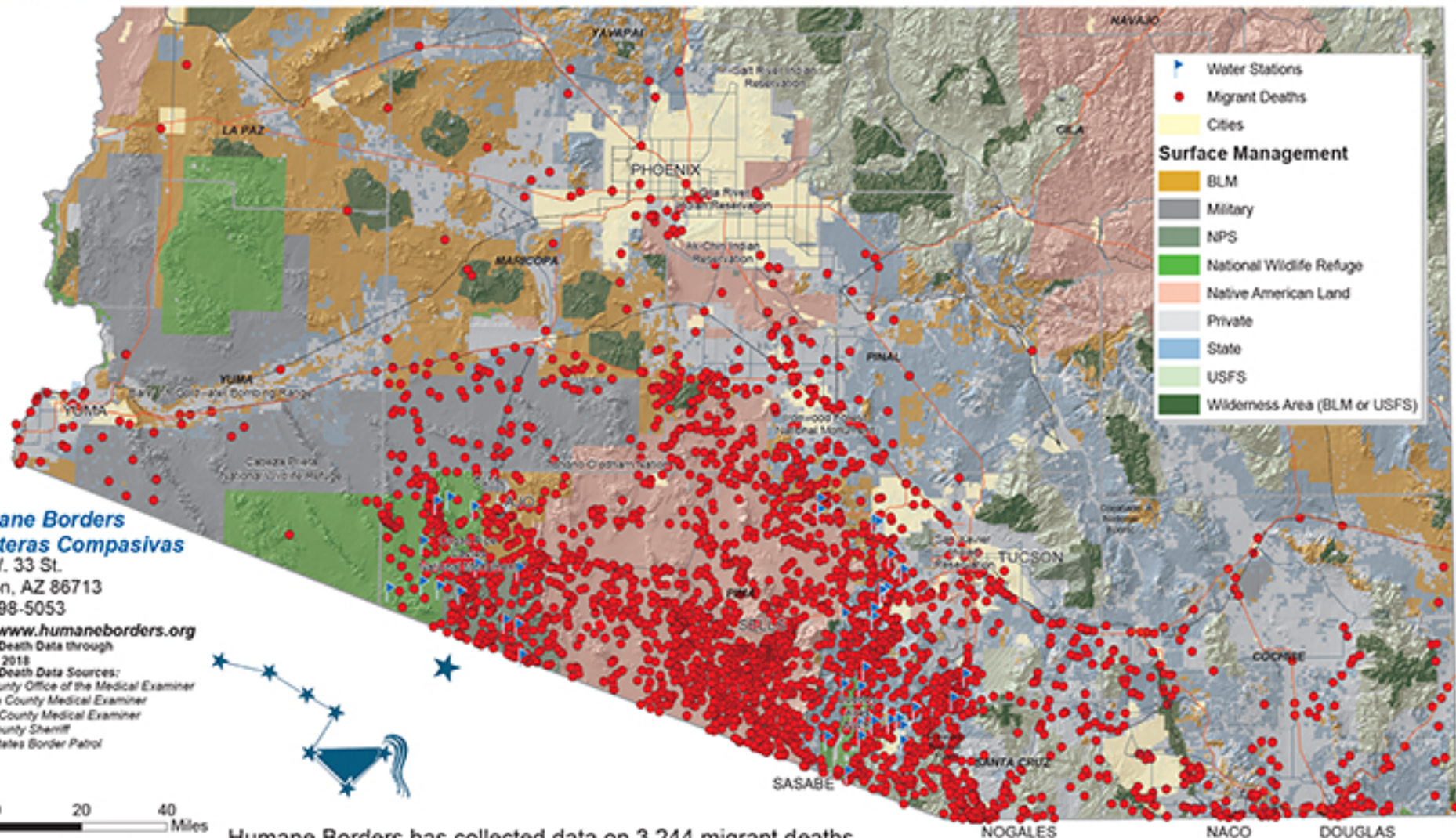


1999 - 2018 RECORDED MIGRANT DEATHS AND HUMANE BORDERS WATER STATIONS



Humane Borders
Fronteras Compasivas
243 W. 33 St.
Tucson, AZ 86713
520-398-5053

<http://www.humaneborders.org>
Migrant Death Data through
April 30, 2018
Migrant Death Data Sources:
Pima County Office of the Medical Examiner
Maricopa County Medical Examiner
Cochise County Medical Examiner
Yuma County Sheriff
United States Border Patrol

Humane Borders has collected data on 3,244 migrant deaths occurring between October, 1999 and April 30, 2018. This map shows those that can be located in space. Some dots represent more than one death.

Over the past 18 years, Humane Borders has deployed equipment for over 80 water stations at remote, strategic locations in Mexico and the USA.