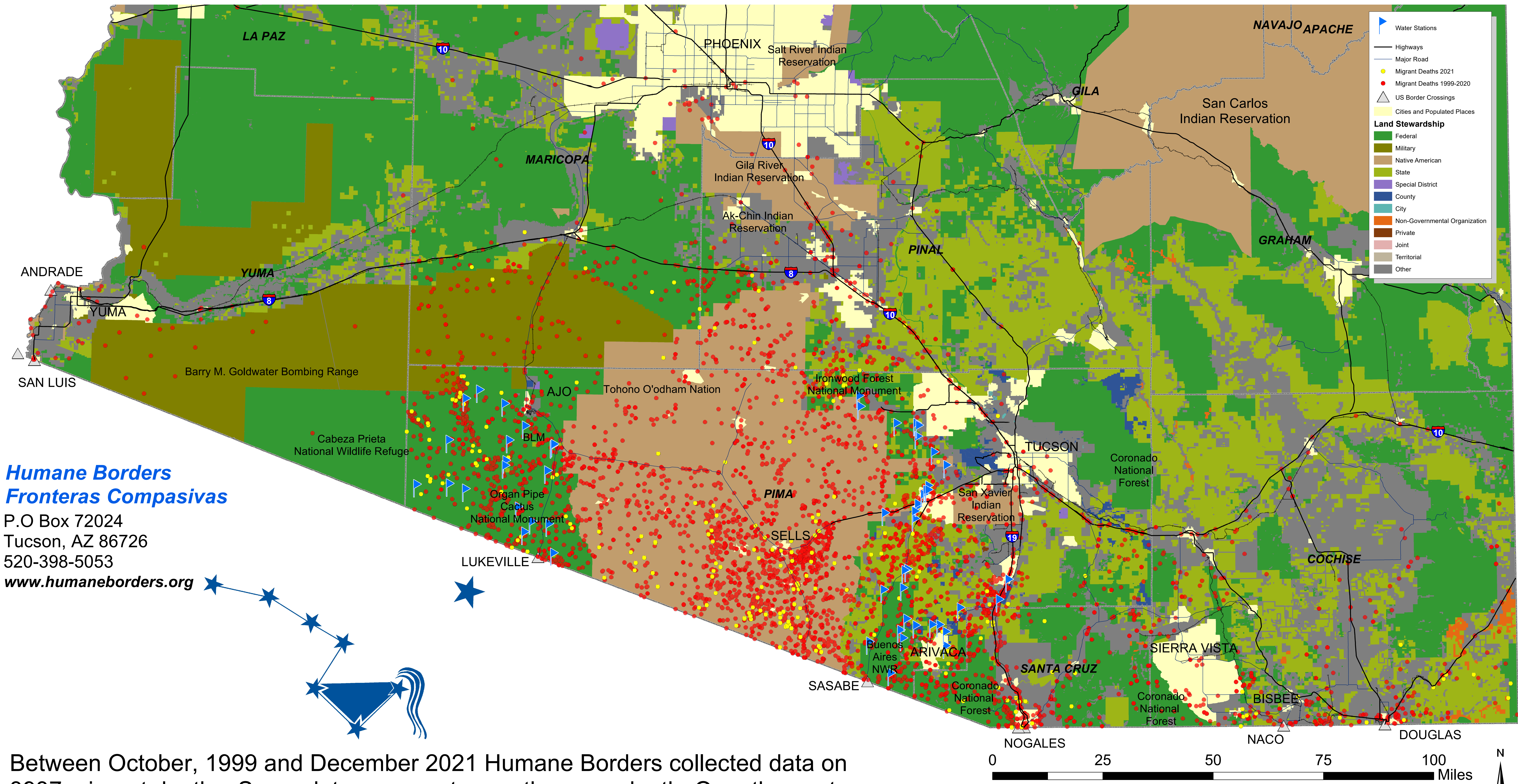


1999 - 2021 Recorded Migrant Deaths and Humane Borders Water Stations



Humane Borders
Fronteras Compasivas

P.O. Box 72024
Tucson, AZ 86726
520-398-5053

www.humaneborders.org

Between October, 1999 and December 2021 Humane Borders collected data on 3937 migrant deaths. Some dots represent more than one death. Over the past 20 years, Humane Borders deployed equipment for over 80 water stations at remote, strategic locations in Mexico and the USA.

Migrant Death Data Sources:
Pima County Office of the Medical Examiner
Maricopa County Medical Examiner
Cochise County Coroner
Yuma County Sheriff
United States Border Patrol