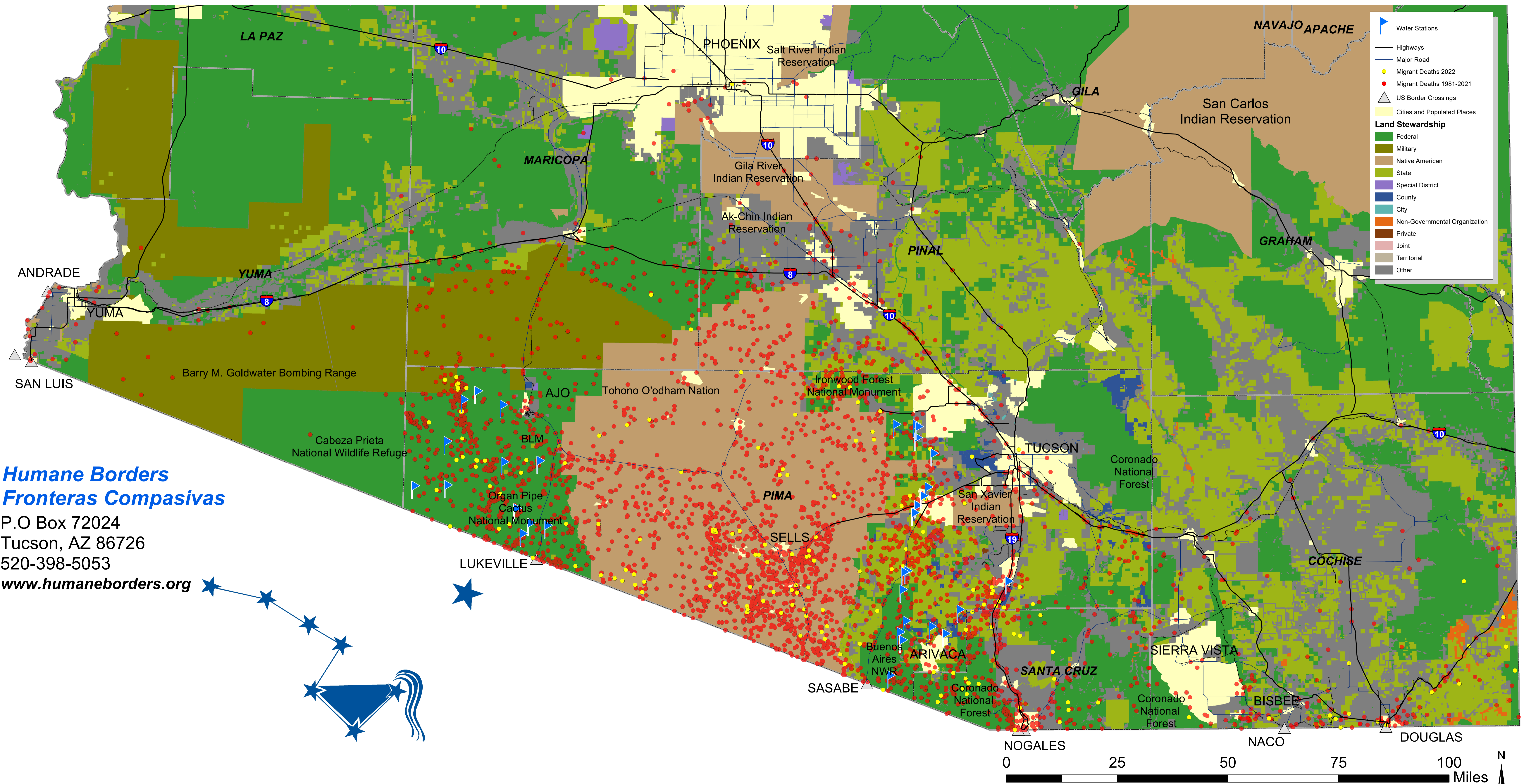


# 1981 - 2022 Recorded Migrant Deaths and Humane Borders Water Stations



Humane Borders collected data on 4093 migrant deaths that occurred from 1981 through 2022. Some dots represent more than one death. Over the past 22 years, Humane Borders deployed equipment for over 80 water stations at remote, strategic locations in Mexico and the USA.

**Migrant Death Data Sources:**

Pima County Office of the Medical Examiner  
 Maricopa County Medical Examiner  
 Cochise County Coroner  
 Yuma County Sheriff  
 United States Border Patrol

