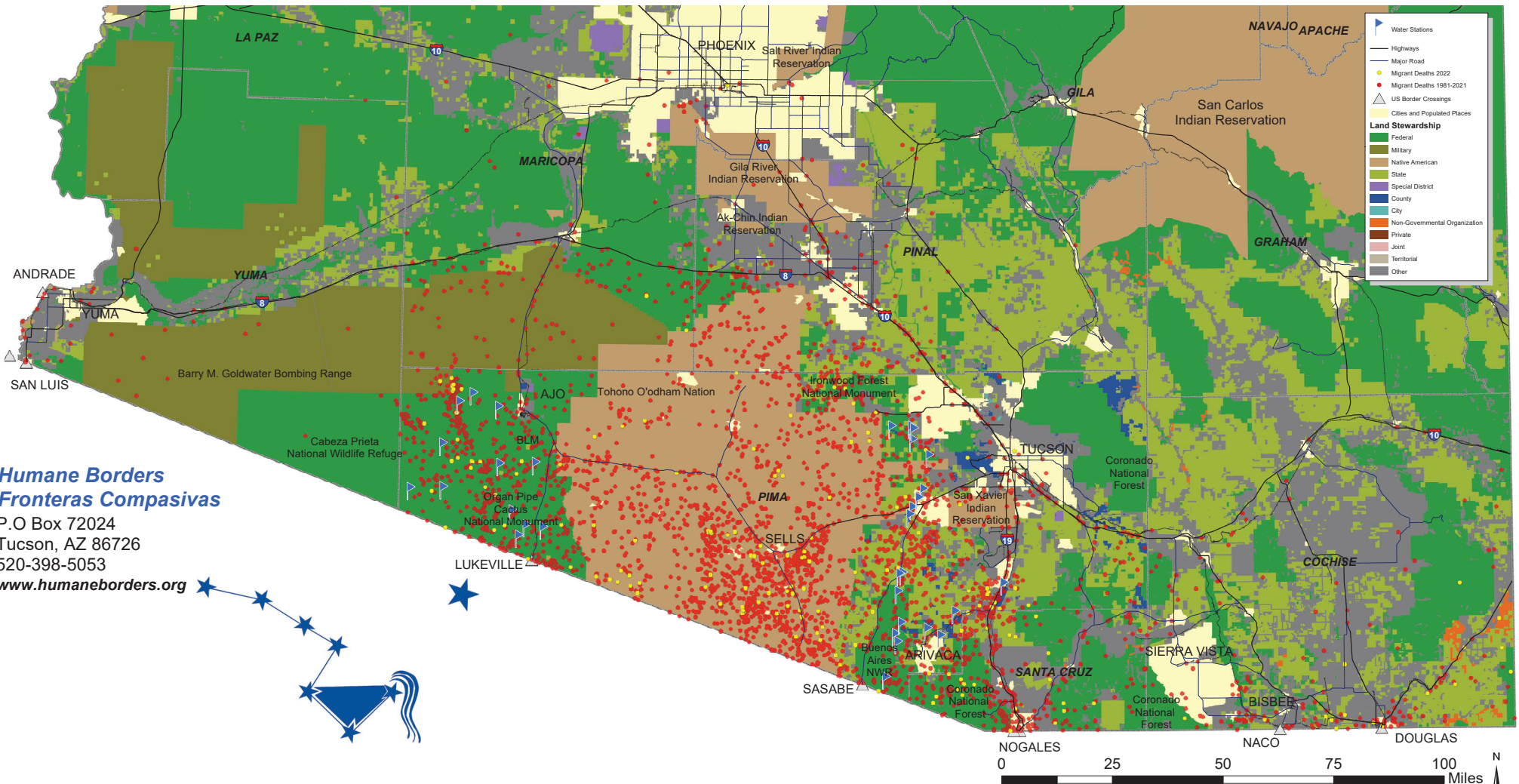


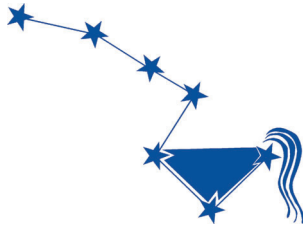
1981 - 2022 Recorded Migrant Deaths and Humane Borders Water Stations



Humane Borders Fronteras Compasivas

P.O Box 72024
Tucson, AZ 86726
520-398-5053

www.humaneborders.org



Humane Borders collected data on 4093 migrant deaths that occurred from 1981 through 2022. Some dots represent more than one death. Over the past 22 years, Humane Borders deployed equipment for over 80 water stations at remote, strategic locations in Mexico and the USA.

Migrant Death Data Sources:

Pima County Office of the Medical Examiner
 Maricopa County Medical Examiner
 Cochise County Coroner
 Yuma County Sheriff
 United States Border Patrol