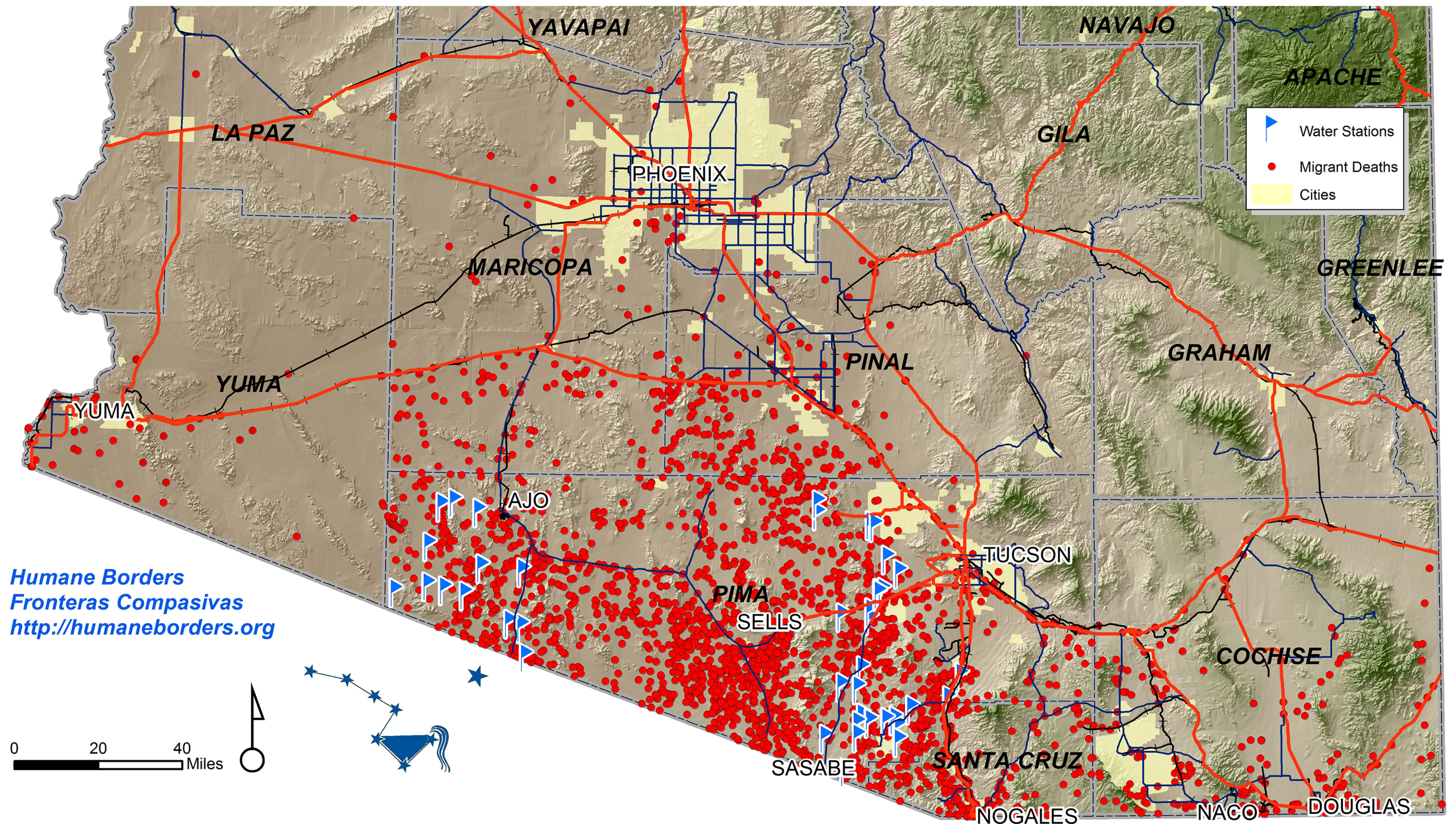


1999 - 2016 RECORDED MIGRANT DEATHS AND WATER STATIONS



Humane Borders
Fronteras Compasivas
<http://humaneborders.org>

Red dots on the map show locations of the 3,087 migrant deaths documented by Humane Borders. The deaths occurred in southern Arizona between October 1, 1999 December 31, 2016. In an effort to reduce the deaths, Humane Borders has equipped more than 80 water stations in remote, strategic locations on both sides of the international border.